

Shuswap Trails 11th Annual 2015/2016 Progress Report

March 02, 2016

Presented by: The Shuswap Trail Alliance
www.shuswaptrailalliance.com



You are in Secwepemc Territory. . .

Darren Robinson
PHOTOGRAPHY



10 years ago . . .

- Isolated local **priorities**
- 2002 Shuswap **Tourism Opportunity Strategy**
- CSRD **Parks** planning
- Pre-Olympic **priorities**
- 2005 **round table** discussion re: trails
- 2006 **feasibility** study & community **consult**
- **BC Trails** Strategy



The Shuswap Trail Strategy. . .

Establish the entire Shuswap Watershed as a **united destination trail centre** known for its active lifestyle, vibrant culture, natural beauty, and commitment to sustainable ecology



Well designed,
Well signed,
Well maintained,
Well promoted



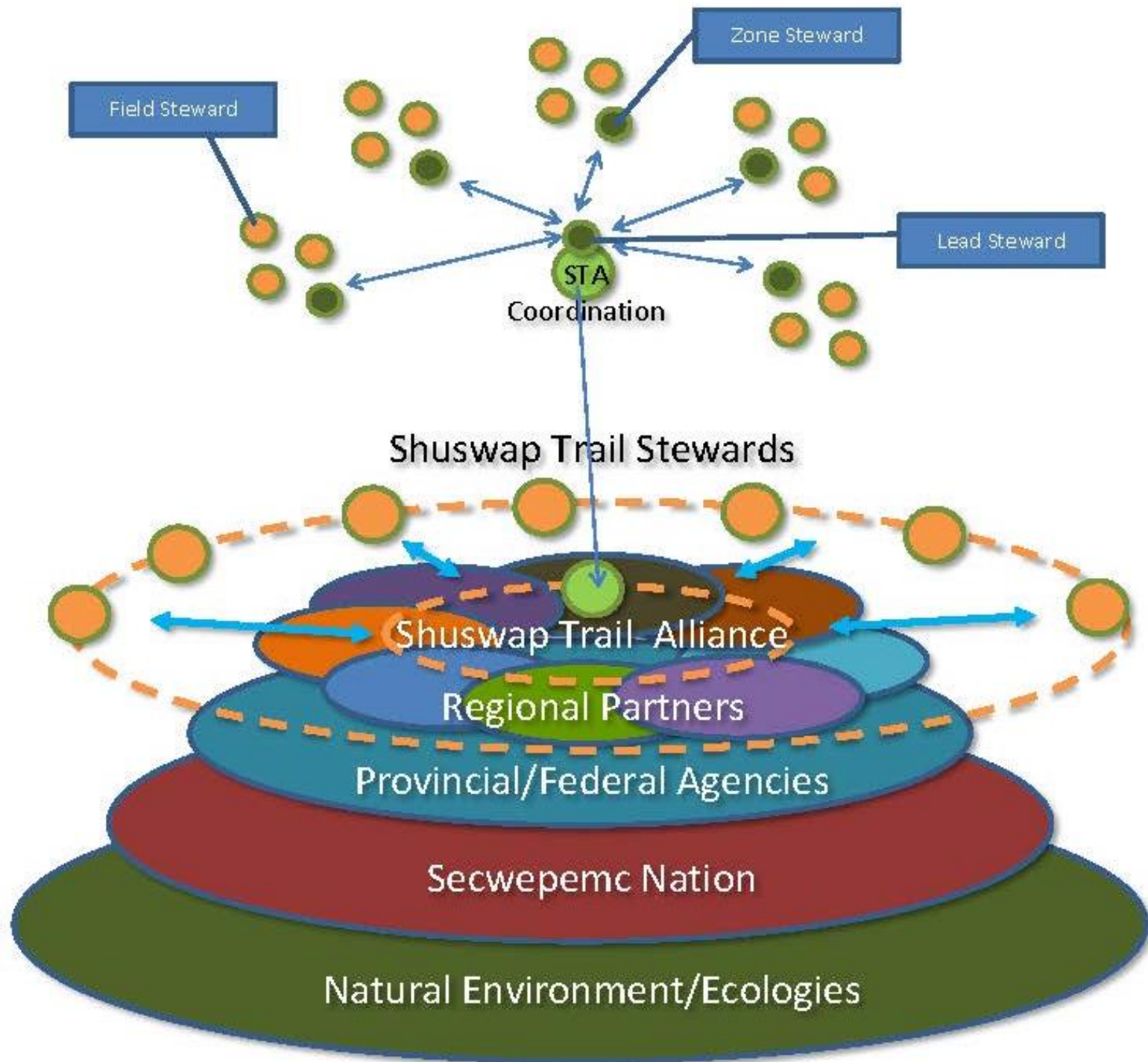


The Shuswap Trail Alliance. . .

the organizational body (formed in 2005) through which **local and regional leadership work together** to develop and implement the Shuswap Trails Strategy. . .

. . .as First Nations, stewardship, government, industry, business, and community stewardship organizations and individuals.

Weaving it Green for Generations
in a spirit
of respect, cooperation,
and stewardship





Shared **tools**. . .

- Regional trail **strategy**
- Shuswap Trail **Protocol**
- Design **standards**
- **Sign** standards
- Environmental **adaptive plan**
- Trail **development team & tool room**
- Trail **stewardship** program
- Experience **programs**
- Shuswap trail **guide**
- www.shuswaptrails.com
- trailreport@shuswaptrails.com

The outcome ~ with partners ~ since 2006. . .

- Over **200 completed** greenway trail projects.
- **11 signature** trail systems, over **90** regional trails
- 100+ km of new trails **valued over \$1.9 million**
- Over 730 new trail **signs**, 5500 blazes
- Emerging four-season trail based **marketing**
- **\$3,850,000** in **leveraged cash/in-kind** investment

Shapely boardwalk curves on the new Mt Baldy Trail



And **in 2015** we completed. . .

- **62** projects
- with **49** partners
- **8** new trails, **8,100** meters, **5** locations
- **177,000** meters maintained and upgraded
- **87** new signs, **8** locations
- **49** volunteer events, **437** people, **50%** youth



Trail stewards from around the Shuswap gather with Peter Jennings at North Fork Wild

And 10 new structures!



Projects completed in all **5 Core Pillars** . . .

1. Regional **Collaboration**
2. Trail **Stewardship**
3. Environmental **Adaptive Planning**
4. **Experience** Development
5. Capital **projects/technical** trail services



Hillcrest student volunteers clean up the Rifle Range Trails

2015 Regional Collaboration . . .

- Shuswap Trail Strategy and Roundtable
- Regional trail marketing with Shuswap Tourism
- Healthy Communities Coalition (Active Transport)
- Enderby-Splatsin Riverwalk Extension Plan
- Sicamous-to-Armstrong Rail Trail Initiative
- Shuswap Arts Council 2016 Trail Mix Exhibition
- Stewardship partner support (LHNS, EQTrails, BCHBC, Shuswap Cycling, White Lake, SCAdvisory, SO!, SABNES, Adams River, Skmana)



December Regional Trail Strategy and Roundtable

2015 Trail Stewardship. . .

- TrailReport@shuswaptrails.com hotline
- Annual stewardship **schedule**
- Spring “workshop-in-the-woods” **training**
- Trail Stewardship **Advisories**
- November Stewardship **review**
- Trail environmental **screening** tool (T.E.S.T.)

Later Day Saints youth outreach volunteers build trails at South Canoe



2015 Environmental **Adaptive** Planning. . .

- Trail environmental **screening** tool (T.E.S.T.)
- **Erosion & stream protection** upgrade projects
- **Invasive plant** workshops and pulls with CSISS
- Mara Meadows **plant survey and terrain study**
- Owlhead/Cummings **access management** plan
- Adams River **pictograph protection** project



Robyn Hooper (CSISS) trains trail stewards on how to identify and cull invasive plants

2015 **Experience** Development. . .

- **Shuswap Trail Guides** with Shuswap Tourism
- **ShuswapTrails.com** online maps and info
- Trail event tourism with **Single Track 6**
- **Outdoor Education** support with S.O.L.F.
- Shuswap Adaptive **Trail Rider** Society
- Inter-regional **Trail Advisory** with TOTA
- **International exposure** Patagonia & FAM support



Pilgrimage to Adams River Gorge

2015 Trail Development: **Regional** Highlights. . .



Adams River Pictograph Protection

North Fork Wild Conservation Park Trails

Evelyn Falls Trail

Bear Creek Flume Trail Upgrades Plan

Eagle River Volunteer Days

White Lake Trail Stewards

Owlhead/Cummings Management Plan

Mt Baldy Lookout Bridge

Sorrento Hwy West Trail Plan

Rubberhead/Larch Hills/South Canoe Single Track 6 Prep

Hyde-Around Addition to LHT

Park Hill Centre Trail and Stairs

Mara Meadows Plant Study

Salmon Arm Bike & Connector Planning

Sicamous-Armstrong Rail Trail

Little Mountain Kiosk Signs

Enderby Cliffs replanting

South Canoe Trail Upgrades & Additions

Enderby Splat sin Riverwalk Plan

© 2014 Cnes/Spot Image
Image © 2014 Province of British Columbia
Image © 2014 DigitalGlobe
Image City of Salmon Arm

Google earth

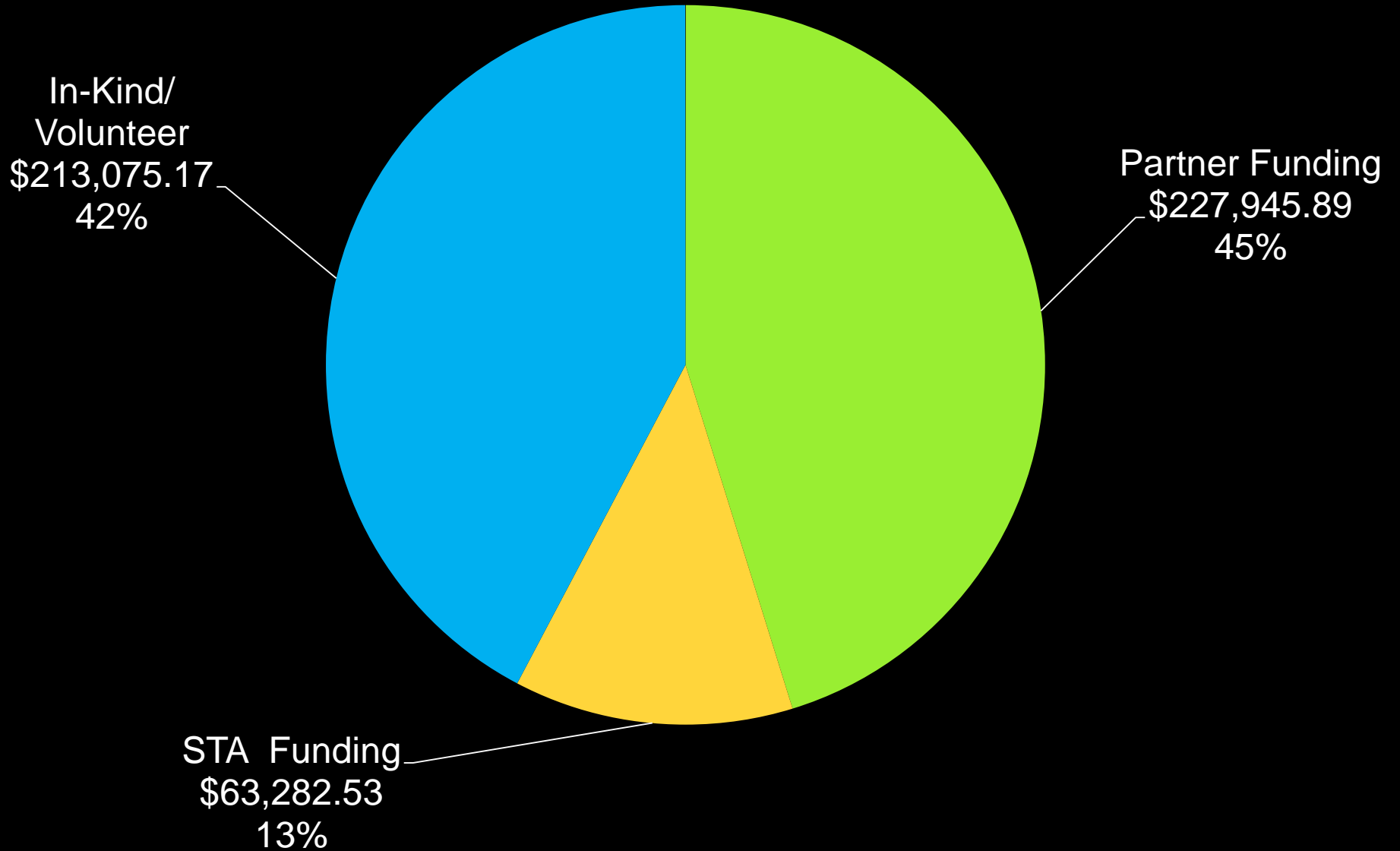
Imagery Date: 5/24/2007 50°47'23.29" N 119°13'23.22" W elev 538 m eye alt 95.11 km



Leveraged Resources . . .

- Community Fundraising
- CSRD Parks Area C, D, E, F
- City of Salmon Arm
- City of Enderby/NORD Area F Parks
- Rec Sites and Trails BC, BC Parks
- BC Healthy Communities
- Salmon Arm Savings & Credit Union
- Shuswap Community Foundation
- National Trails Funding Program
- Horse Council of BC & BCHBC
- Community, Volunteers, In-kind

2015 Project Value: \$504,303.58



What has worked. . .

- Strategic
- Researched
- Collaborative
- Pooled resources
- Comprehensive scope
- Government buy-in
- Triple bottom line
- Inclusive



Working together. . .

- Respect
- Cooperation
- Stewardship



Growing stewards. . .

- Target
- Invite
- Train
- Support
- Persist
- Thank



Challenges. . .

- Capacity
- Patience
- Assumptions
- Complexity
- Hard Work
- Bad Work
- Isolation
- Time



Lessons . . .

- You are never alone on the land
- The table is round, and it is big
- Eco-systems and ecologies speak, but quietly
- This is **Secwepemc Nation territory**
- Respect does not need to wait for policy
- Locally, relationships count, trust takes time
- Together solutions are possible, and stronger





A few key values...

- Reverence
- Humility
- Respect
- Balance
- Enough
- Gratitude

Smelling the flowers on the Skimiikin trail system

The Result. . .

- Joy



Looking Ahead. . .

Enderby Splatsin Active Transportation Planning Workshop





New Trail Targets in 2016 . . .

- North Fork Wild - Phase 3
- Owlshead Management Plan
- Eagle Valley Alpine Trails Plan
- Sicomous-Armstrong Rail Trail
- Enderby-Splatsin Trail Sign Plan
- Glenemma Trails Plan
- Larch Hills Traverse Top-O-Sic
- South Canoe Trail Additions
- Rubberhead Black Dog & Climb
- Salmon Arm Bicycle Plan
- Mt Ida Trail Management Plan

New Trail Targets in 2016. . .

- White Lake Trails Planning
- Mt Baldy Trail Addition
- Sorrento Hwy West Trail
- Adams River Pictograph Plan
- Onyx Falls & Ferrell's Field
- Hunakwa Lake Portage Trail
- Upper Seymour Paddle Trail
- Scatchard Mtn Rocky Road Trail
- Shuswap Trail Mix Art Exhibition
- And more, watch for updates. . .





2016 - 2020 **Priorities** . . .

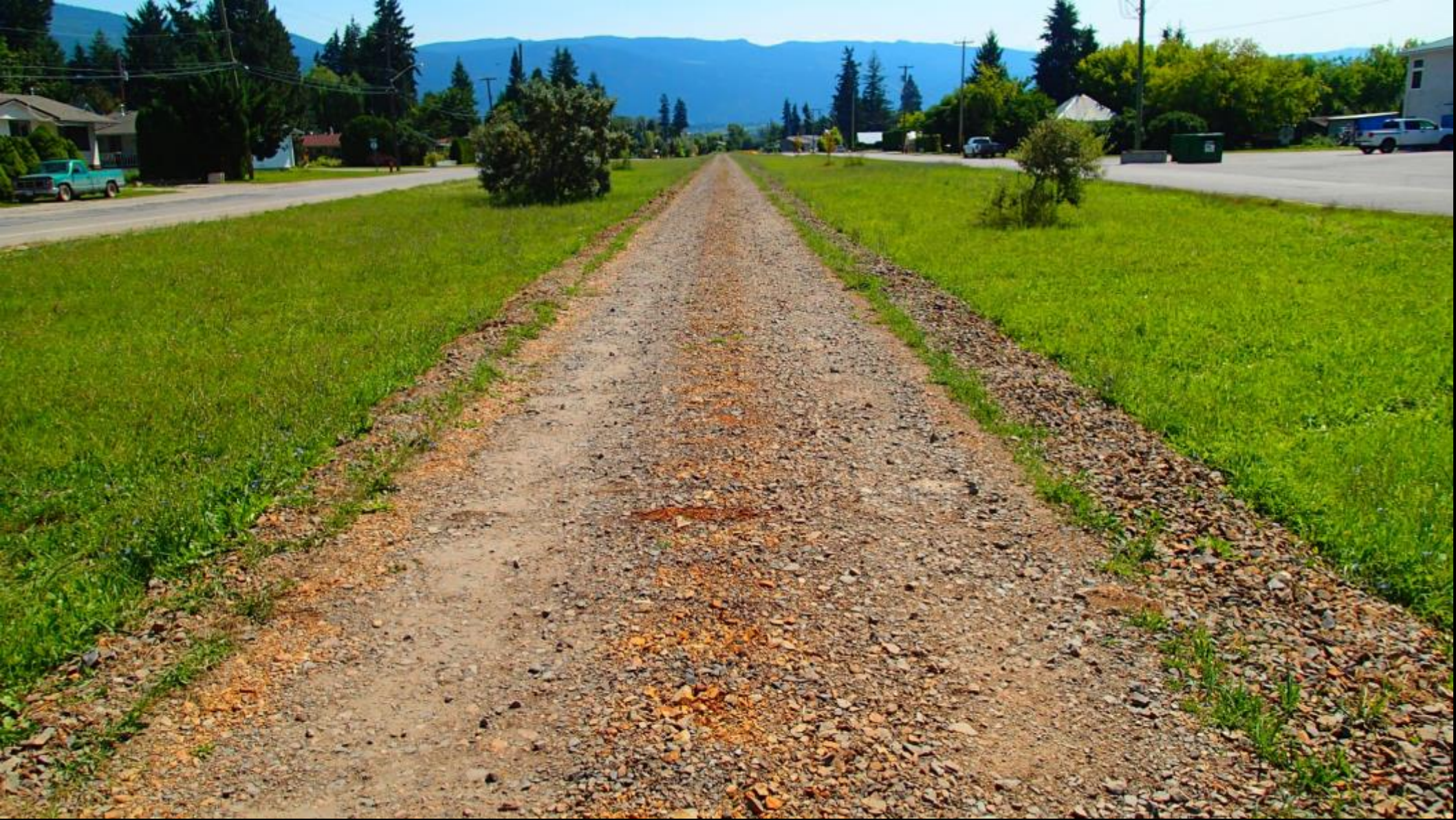
- Mobilize **Regional Trail Roundtable** and Implement Access Management Priorities
- Grow the **Volunteer Trail Stewardship Program** and Local Trail Advisories
- Update **Regional Greenway Trail Strategy**, Business Plan, and Marketing Plan
- Develop and Implement Community **Active Transportation Plans**
- Advance **Community-to-Community Trail Connectors**

Highlights 2016. . .

- Trail Stewards Training – April 8 & 9
- Provincial Share the Trails Workshop – May 6 & 7
- Trail Mix Art Exhibition – July/August
- Fall Trail Stewards Review – Nov 5
- Shuswap Trails Roundtable – Nov TBA
- STA Business Plan Update. . .
- West Bay Trail Connector. . .
- East Shuswap Alpine Trail Management. . .
- And. . .



Abandoned Rail **Trail?** Corridor. . .

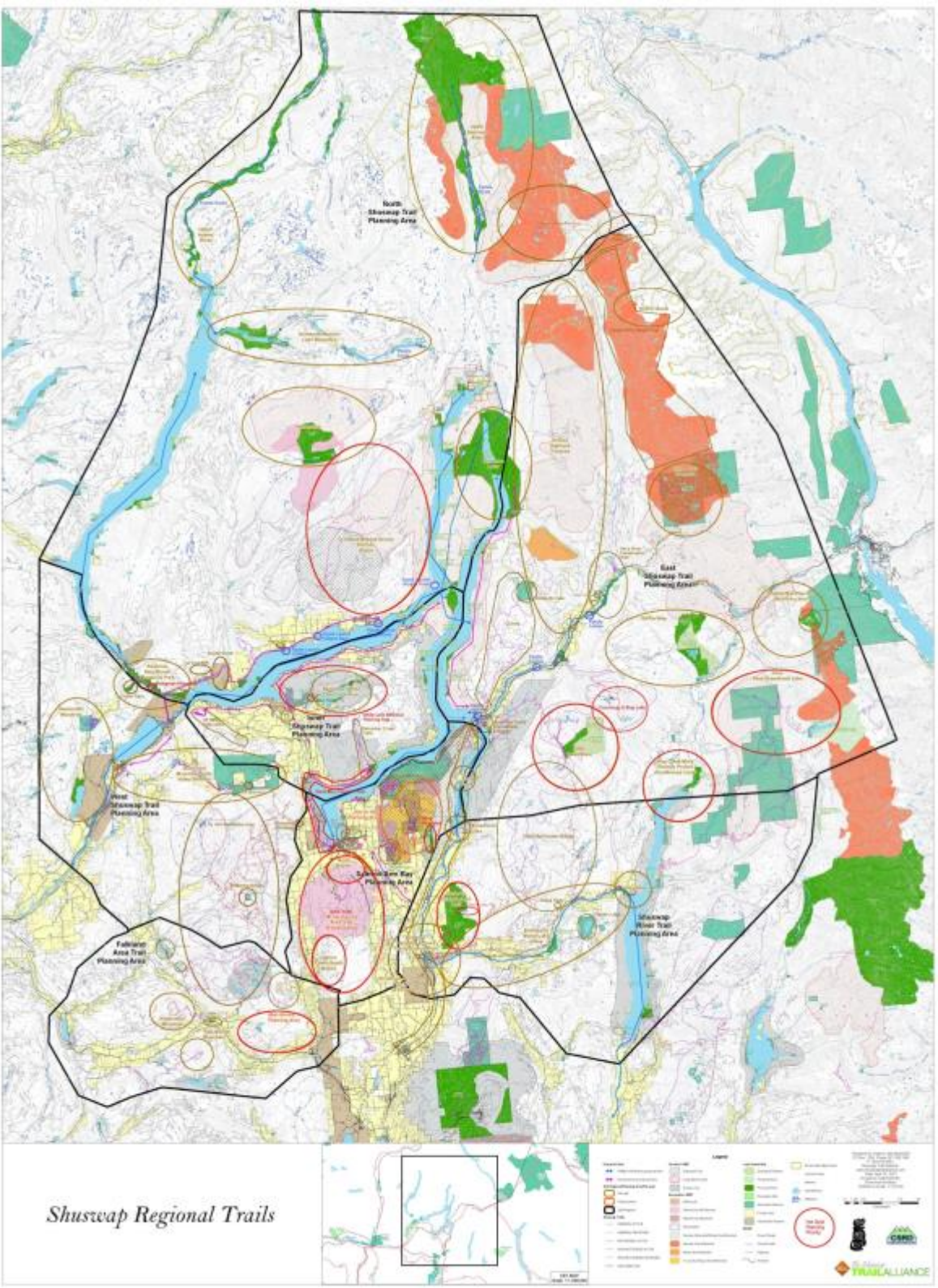


Abandoned rail corridor through Enderby

Abandoned Rail **Trail?** Corridor. . .



Abandoned rail corridor along west shores of Mara Lake viewed from the Hyde Mountain Lookout





ACTION

- Use the trails
- Tell others about the trails
- Join a local trail organization
- Speak with our elected officials
- Become an Alliance member
- Volunteer – become a steward
- Make a charitable contribution

LOVE your trails?

Build - a - Metre - of - Trail

Support 2015 trail projects.
\$10, \$20, \$50, \$100... EVERY LITTLE BIT HELPS.
PLEASE DONATE BY MAY 30th.

Help build more trails, become a Trailblazer.

**Build.
Maintain.
Use.**

Donate online!
www.ShuswapTrails.com

The Shuswap Trail Alliance
is a registered charity. Your
contributions are tax deductible.

The Shuswap
TRAIL ALLIANCE
250.832.0102
info@shuswaptrails.com

Drop your **DONATION**
at these locations!

CHASE:
G-Force Sports
827 Shuswap Ave.

ENDERBY:
Sutherland's Bakery
101-1701 George St.

SALMON ARME:
Shookum Cycle & Ski
141 Shuswap St. SW

SICAIMOUS:
Eagle Valley RDA Pharmacy
317 Main Street

SORENTO:
Sorrento Prescription ID
1254 TC Hwy.

Build-a-Metre Campaign

- Target: \$75,000 in 2016
- \$5 posts a blaze
- \$10 digs the tread
- \$20* buffs a whole metre
- \$50* caps it in gravel
- \$100* decks it with boardwalk

Make your contribution at . . .

www.shuswaptrails.com



Trailhead opening ceremony on Mt Baldy Trail with CSRD Parks

Thank you!

Please visit. . .

ShuswapTrails.com