



# SECWÉPEMC LANDMARKS PROJECT

Project Background – June 2023

# Sxwetsméllp Landmark



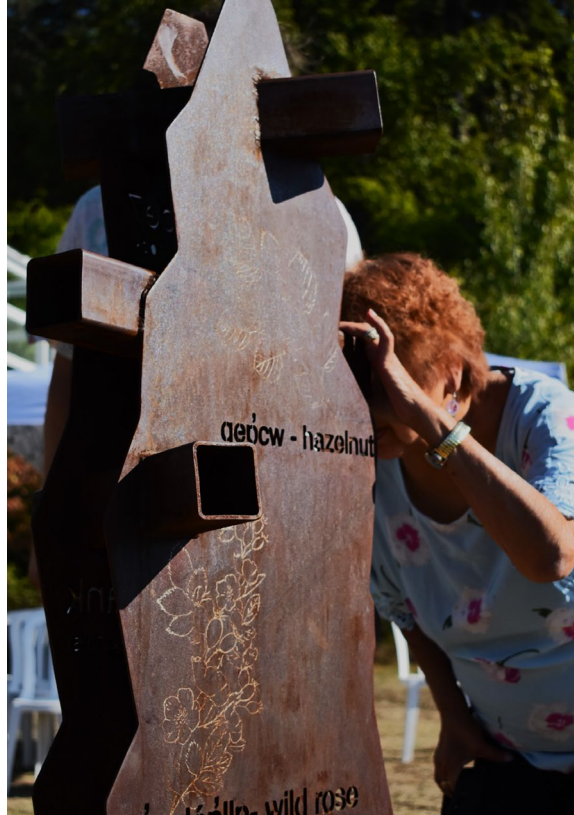
Photos by Sutra Brett, Martha Wickett, Tess Tomma, Eric Kutschker

# Tsqúqw7e Landmark



Photos by Leo Tomma; Martha Wickett (Salmon Arm Observer); and ALIB Communication Dept, Bernadette Dennis Communication Clerk

# P'isell Landmark (RJ Haney Heritage Museum)



Photos by Ash Simpson, Splatsín Title and Rights

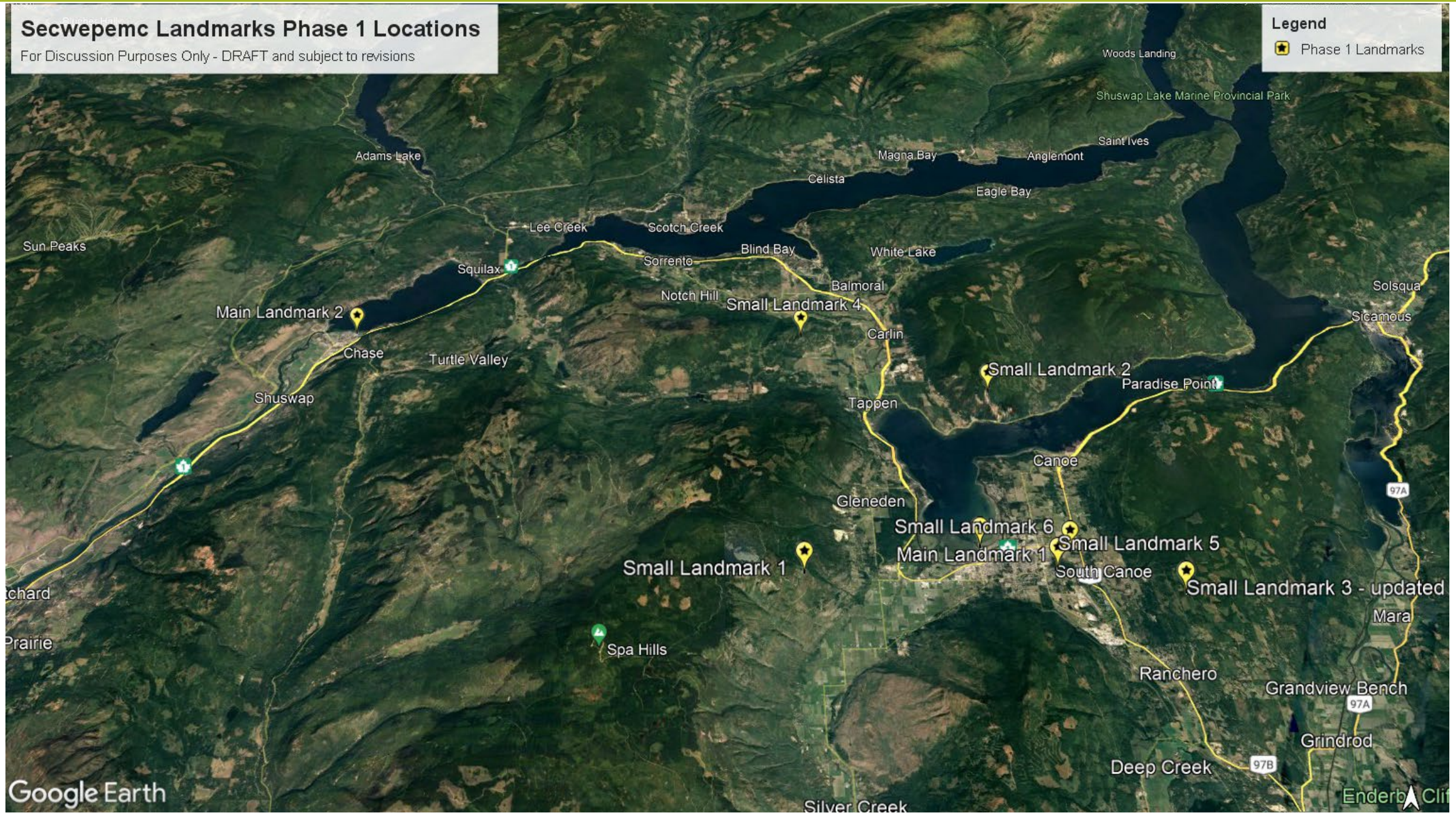
# TRAILHEAD POST CARVING



# Secwepemc Landmarks Phase 1 Locations

For Discussion Purposes Only - DRAFT and subject to revisions


**Legend**  
★ Phase 1 Landmarks

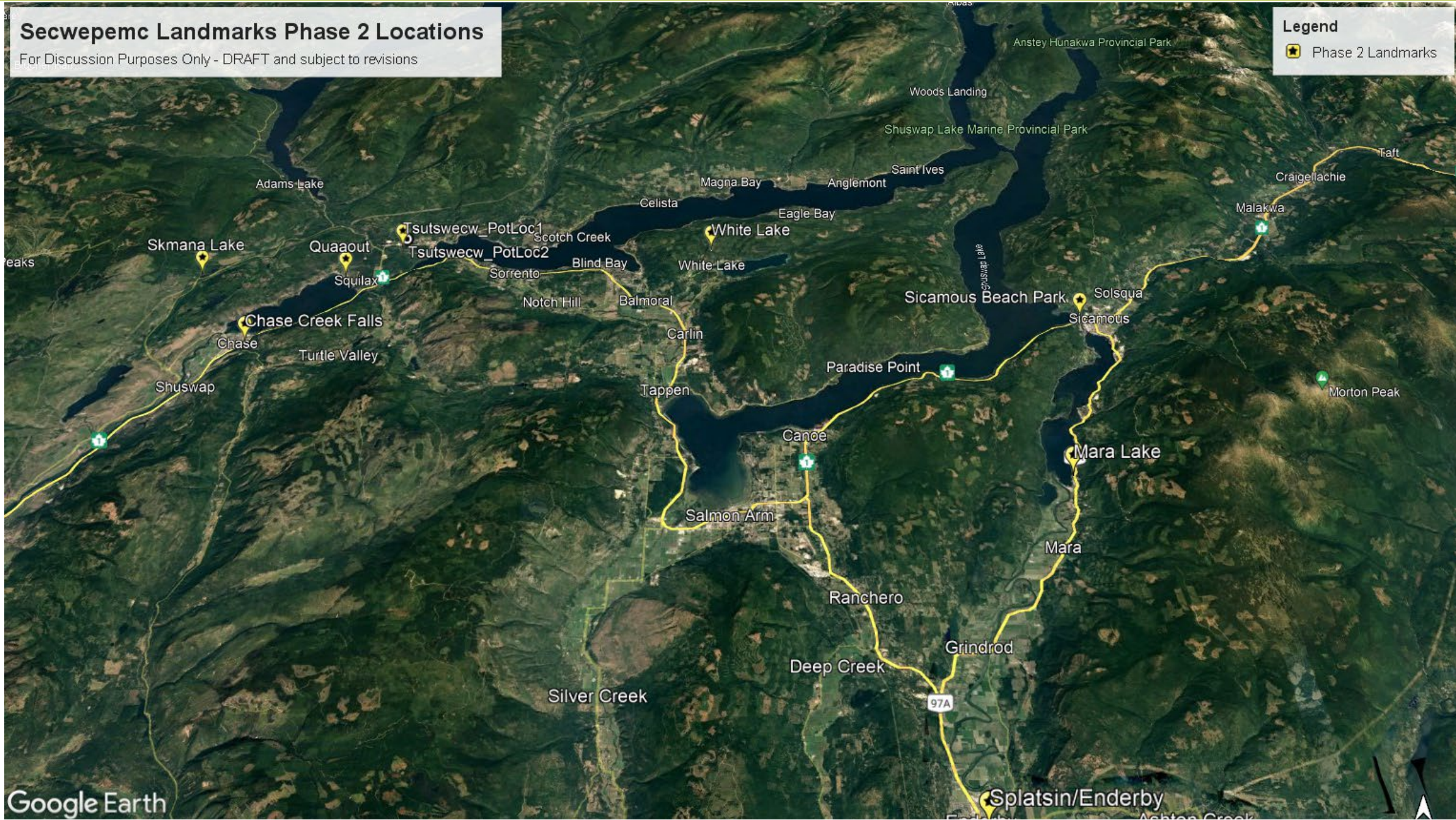


# Secwepemc Landmarks Phase 2 Locations

For Discussion Purposes Only - DRAFT and subject to revisions

**Legend**

-  Phase 2 Landmarks





# Sek'maws Landmark





- ❖ Sek'maws sculpture design will include Elders oral histories and Secwépemc place names;
- ❖ Secwépemc Artists: Tania Willard (Neskonlith) and Kel-c Jules (Tk'emlúps);
- ❖ Design modelled after “For Future Matriarchs” fire bowl (by Tania Willard and Krista-Belle Stewart) at UBCO, a memorial sculpture to commemorate the 14 women whose lives were lost in the École Polytechnique massacre.



“For Future Matriarchs” by Tania Willard and Krista-Belle Stewart at UBCO. Photo credit: Nasim Pirhadi.

# Splatsin Landmark Sculpture (DRAFT)

Note: Design will be updated to include a metal fish weir piece around this sculpture, once design is completed by Artist

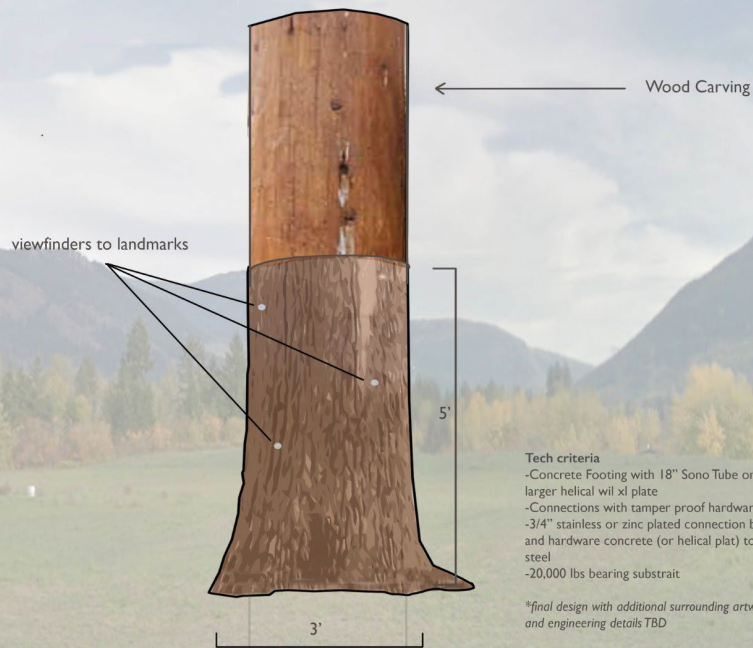
## Secwepemc Landmarks Phase II Splatsin/City of Enderby Hop, Tony & David - Draft Design

- Steel Stump of tree
- Top same diameter as the base of the carving
- animal and plant names and images etched into side(fig.1)
- viewfinders in sidewall
- corten finish with etching
- permalac clear applied to both steel and wood
- placenames and transtions cut into steel sidewall(fig.2)

Figure 1



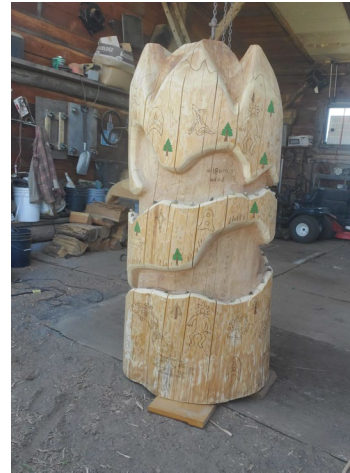
Figure 2



- Tech criteria
- Concrete Footing with 18" Sono Tube or larger helical w/ xl plate
  - Connections with tamper proof hardware
  - 3/4" stainless or zinc plated connection bolts and hardware concrete (or helical plat) to steel
  - 20,000 lbs bearing substrait

\*final design with additional surrounding artwork and engineering details TBD

djh





Kukstsemc, Kukwstsamc, Thank you! 😊

For any project questions or concerns please get in touch any time to:

Shelley Witzky ([switzky@alib.ca](mailto:switzky@alib.ca))

Trina Antoine ([trina\\_antoine@splatsin.ca](mailto:trina_antoine@splatsin.ca))

Dorry William ([storyboardassist@shuswaptrails.com](mailto:storyboardassist@shuswaptrails.com))

Libby Chisholm ([lchisholm@shuswaptrails.com](mailto:lchisholm@shuswaptrails.com), 519-803-2831)

David Jacob Harder

Project website: [Secwepemc Landmarks Project \(shuswaptrails.com\)](http://shuswaptrails.com)